



MADE SAFE™

Manufacturing Safety for Manitoba

SERVICE GUIDE 2017

An initiative of



CONTENTS

About us	4
Member & Associate Member services	4
Non-Member services	4
Consulting	4
Noise level testing (ambient and personal)	5
Auditing and certification	6
Training	8
Major courses	8
Lunch and Learn	10
Course descriptions	11
Adult Learning Theory	11
Aerial Lift Operator Theory	12
Aerial Lift Practical Evaluator	13
Aerial Lift Theory & Practical	14
Aerial Lift Train the Trainer	15
Confined Space Awareness	16
Ergonomics (MSI) Training	17
Fall Protection Theory & Practical	18
Fall Protection Train the Trainer	19
Forklift Operator Theory	20
Forklift Theory & Practical	21
Forklift Train the Trainer	22
Forklift Practical Evaluator	23
Inspections Training	24
Internal Auditor Training	25
Investigations	26
Lockout – Tag Out	27
Overhead Crane Operator Theory	28
Overhead Crane Practical Evaluator	29
Overhead Crane Rigging Training	30
Overhead Crane Train the Trainer	31
Racking Inspection and Maintenance	32
Respiratory Protection Theory/Fit Testing	33
Respiratory Protection Train the Trainer	34
Safety Essentials for Leaders	35
Reasoning	35
Safety Essentials for Supervisors	36
Safety Management Systems (SMS)	37
Telehandler Training	38
Violence & Harassment Training	39
WHMIS after GHS Training	40
WHMIS after GHS Train the Trainer	41
Workplace Safety & Health (WPS&H) Committee Training	42
For more information	43

ABOUT US

An initiative of CME Manitoba, Made Safe is the non-profit safety association for Manitoba dedicated to the prevention of injuries in the manufacturing sector. As the manufacturing sector certifying partner for SAFE Work Certified, Made Safe is supported by SAFE Work Manitoba.

Made Safe advisors are well trained and experienced safety professionals. Advisors are chosen based on their industry knowledge and abilities. Each advisor spends considerable time and effort every year updating their knowledge and skills. Our employees have professional designations (i.e. Canadian Registered Safety Professional (CRSP) from the Board of Canadian Safety Professionals, Certified Ergonomics Specialists (CES), Ergonomics Systems Specialist (ESS) and the Certified Health and Safety Consultant (CHSC) designation from the Canadian Society of Safety Engineering).

MEMBER & ASSOCIATE MEMBER SERVICES

Participating manufacturers provide baseline funding for the association through their Workers Compensation Board (WCB) premiums. Generally, the fee is less than six per cent of their overall premiums, which works out to less than \$60 per worker per year at the base rate. In exchange for this upfront fee, most courses, all safety consulting, and all safety auditing and certification support are provided at no additional charge.

The courses listed in this guide can be accessed through our regional classes (most cost effective) or at your specific site. Each course overview indicates whether they are available regionally or at your site. Some services, such as our industrial baseline tests, are obviously site specific.

NON-MEMBER SERVICES

Made Safe is one of the key safety training and advising associations in Manitoba. We regularly provide training and safety advice for many manufacturers as well as other organizations on a fee-for-service basis. Generally, our fees are well below market cost and the content of our courses meets all legislative, industry best practice and CSA Standards.

All manufacturers and organizations are welcome to attend our regional and community-based training courses on a fee-for-service basis. Non-members that wish to be informed of our regional and community-based training schedule need only supply us with basic information about their organization. Made Safe will contact firms by email and/or electronic newsletter well before (usually at least 30 days) any courses.

Made Safe currently offers 22 regional classes and 33 site-specific classes. Regional classes (Winnipeg, Winkler, Brandon, etc.) of the more popular types are delivered on a regular basis. Site-specific classes are delivered on an as requested basis. All classes meet CSA Standards, provincial legislation and the approved or incorporated codes of practice mentioned in legislation.

"The Safety Associations resources have enabled us to reach a standard within our Health & Safety Management Program that is both reflective of legal obligations to the Manitoba Government as well as moral obligations to our most valuable asset: our employees. Their training programs coupled with their knowledgeable trainers, enable us to pursue both legislative demands and achieve a high level of understanding of the subject matter. The course material made available to the audience is of great value for future reference.

We continue to utilize the services to meet our growing needs in improving our Health & Safety Program".

ERNIE FRANZ

*Occupation Health and Safety Coordinator
Meridian Manufacturing Inc.*

CONSULTING

Made Safe provides a number of occupational hygiene and other services. These include testing of the noise, noise level dose for specific workers (i.e. dosimeter), ergonomic assessments, respiratory fit testing, workplace inspections and more.

Made Safe advisors can provide expert advice on the suitability of specific tasks and work stations. Each advisor can work with your staff on how to perform physical demands descriptions for all jobs so that you can hire and train the right workers for the job. All Made Safe ergonomic assessments are followed up with a written report.

Noise level testing includes specific task and general area as well as noise dosage over a set timeframe for a specific worker. The reports generated from these tests are accurate and can be used to plan your hearing conservation programs.

Respiratory fit testing is performed with a TSI Port-a-Count, one of the most accurate devices on the market. Made Safe can provide training for your workers and the medical assessment forms that must be completed before testing. Subsequently, a Made Safe advisor can be on-site to perform the fit test.

Our inspections provide a professional quality assessment of your workplace. This may become quite important.

Made Safe bases inspections on the observation portion of the certification audit as well as various legislation pieces including the National Fire Protection Act. All inspections include a written report with specific suggestions regarding any issues that are found. Copies of the inspection are restricted to Made Safe and the client firm only.

Made Safe can also perform a Gap Analysis of your safety management system. Gap Analysis includes all aspects of a regular audit except the interviews of workers. A detailed report is provided to the firm indicating any changes recommended to the safety management system to become SAFE Work Certified.

You can arrange training and advising by contacting the Made Safe office by telephone or email (204.949.1454 or info@makesafe.ca), and by registering for a regional class online at makesafe.ca. Please contact us at least 60 days in advance for any services or training that you want at your particular site.

Remember that your organization is always welcome at Made Safe's quarterly safety meetings where issues affecting the manufacturing industry are discussed.

Visit makesafe.ca for the date and location of the next meeting!

NOISE LEVEL TESTING (AMBIENT AND PERSONAL)

Made Safe's personal dosimeter noise level testing includes time-run studies of noise that workers are exposed to throughout their shift. The reports generated from these tests are accurate and can be used to plan your Hearing Conservation Program and Noise Control.

The personal dosimeter noise level testing is performed with a 3M™ The Edge Personal Noise Dosimeter. The Made Safe consultant will train companies on the proper use, positioning and charging of the units for a predetermined length of time. Once the studies are completed, the Made Safe consultant will download the captured noise levels into a comprehensive report for the company. The report will include complete study overview, individual monitor studies. Made Safe will review the report with the firm to discuss recommendations based on the results. Recommended solutions to noise level problems that may be indicated from the testing. Testing includes sound pressure level, maximum sound level, peak level, minimum sound level, average sound level, time-weighted average over an eight-hour period, sound exposure level, dose (related to criterion level) and A/C weighting.

Personal noise level testing performs an important job to ensure the minimization of worker health risks. Our testing provides a professional quality assessment of your workplace. This is quite important to ensure that companies are protecting the workers, to prove due diligence and compliance to the *Workplace Safety and Health Act and Regulations*.



AUDITING AND CERTIFICATION

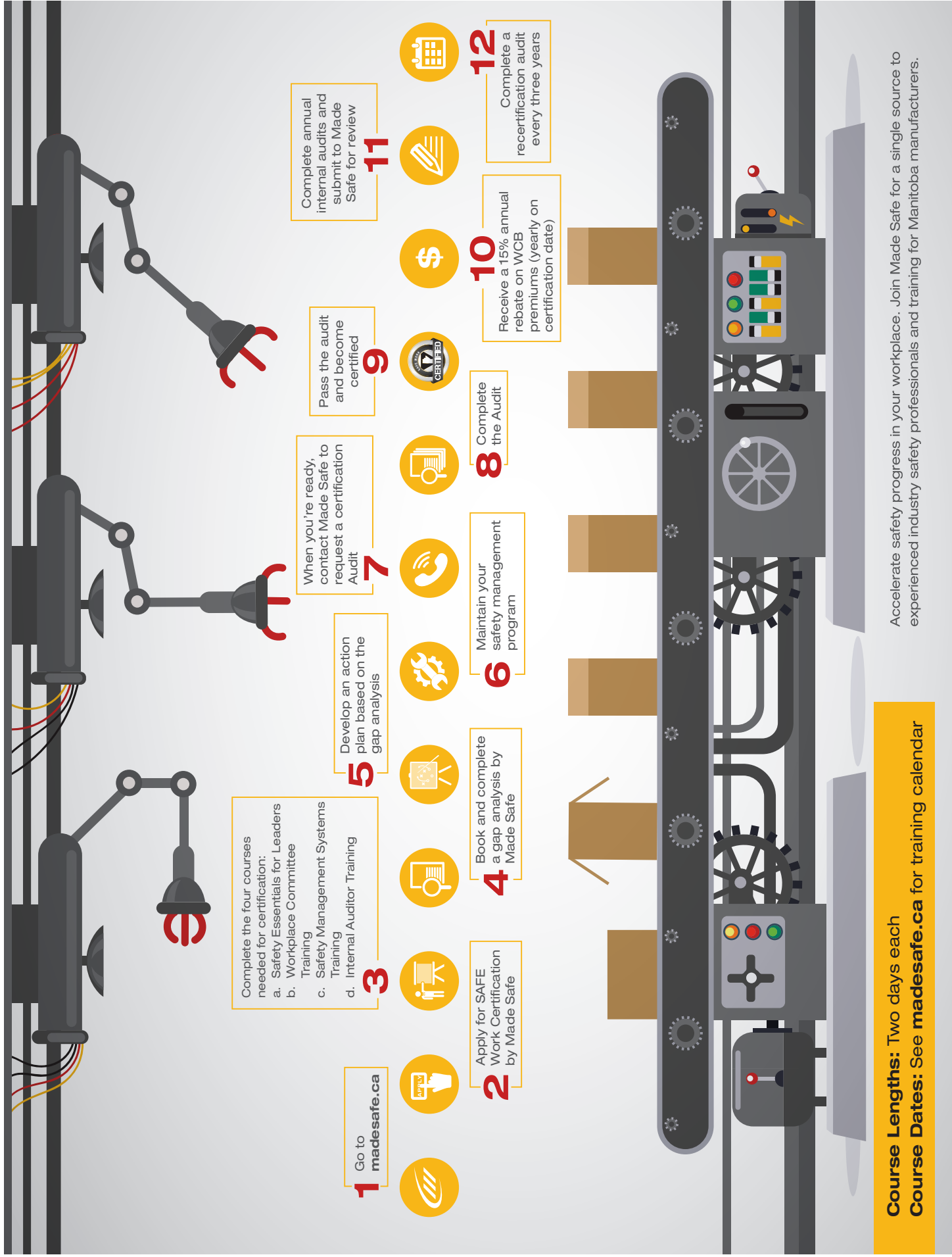
The Made Safe Audit and Certification program is based on international, national and provincial standards and legislation. Made Safe is a certifying partner for SAFE Work Certification. The specific standards are:

SAFE WORK MANITOBA	SAFE Work Certified Standards & Guidelines SAFE Work Certified Audit Framework
INTERNATIONAL STANDARDS	OHSAS 18001:1999 Standard for Occupational Health and Safety System Management ISO 19011:2002 Standard for Auditing Management Systems
NATIONAL STANDARDS	CSA Z1000 Standard for Occupational Health and Safety System Management Codes of Practice (various)
PROVINCIAL LEGISLATION	WS&H Act and Regulations WCB Act and Regulations

A Made Safe audit assesses the firm's safety management system in 15 different elements, including an industry-specific section. Firms that achieve a minimum of 50 per cent in all elements and a minimum of 70 per cent overall are awarded certification.

Certification is valid for three years provided additional criteria are met. These criteria include performing an annual internal audit or having an externally managed health and safety perception survey of the entire workforce. Additionally, firms must be in good standing with WCB to maintain certification.

Made Safe's audit teams are experienced and always include at least one audit team member who, in addition to industry-specific audit training, has qualified at the national/international level to audit to OHSAS, ISO, CSA, and ANSI standards.



Course Lengths: Two days each

Course Dates: See madesafe.ca for training calendar

Accelerate safety progress in your workplace. Join Made Safe for a single source to experienced industry safety professionals and training for Manitoba manufacturers.

TRAINING

MAJOR COURSES

Students receive certificates and/or wallet cards upon successful completion of the classes. Upon request, firms can also receive quarterly reports of the training provided to them by Made Safe. Student files are kept in our database for five years. The courses are as follows:

Note: Associate Members are companies that have submitted their letter of support but whose rate code has not yet reached the 50 per cent threshold required to become Made Safe Members, effective January 1, 2017.

REGIONAL TRAINING COURSES	DURATION	MEMBERS	ASSOCIATE MEMBERS	NON-MEMBERS
(prices are PER PERSON unless otherwise specified)				
Adult Learning Theory *prerequisite for all TTT classes	1 day	Member benefit	\$100	\$300
Aerial Lift Train the Trainer (Includes practical evaluator)	1 day	Member benefit	\$150	\$450
Aerial Lift Operator Theory (Includes practical evaluator)	1 day	\$150	\$250	\$450
Confined Space Awareness	1 day	Member benefit	\$50	\$150
Confined Space Awareness Train the Trainer	1 day	Member benefit	\$150	\$450
Fall Protection	1 day	Member benefit	\$50	\$150
Fall Protection Train the Trainer	Contact Made Safe	Member benefit	\$150	\$450
Forklift Operator Theory (Includes practical evaluator)	1 day	\$150	\$250	\$450
Forklift Train the Trainer (Includes practical evaluator)	3 day	Member benefit	\$400	\$1200
Inspections	1 day	Member benefit	\$100	\$300
Internal Auditor *SAFE Work Certified prerequisite	2 day	Member benefit	\$150	\$450
Investigations	1 day	Member benefit	\$100	\$300
Lockout – Tag Out	1 day	Member benefit	\$100	\$300
Overhead Crane Operator Theory (Includes practical evaluator)	1 day	\$150	\$250	\$450
Overhead Crane Rigging *Overhead Crain training prerequisite	1 day	Member benefit	\$100	\$300
Overhead Crane Train the Trainer (Includes practical evaluator)	3 day	Member benefit	\$400	\$1200
Racking Inspection & Maintenance	Contact Made Safe	Member benefit	\$100	\$300
Respiratory Protection Theory/Fit Testing	Contact Made Safe	Member benefit	\$150	\$450
Respiratory Protection Theory Train the Trainer	Contact Made Safe	Member benefit	\$150	\$450
Safety Essentials for Leaders *SAFE Work Certified prerequisite	2 day	Member benefit	\$150	\$450
Safety Essentials for Supervisors	1 day	Member benefit	\$150	\$450
Safety Management Systems (SMS) *SAFE Work Certified prerequisite	2 day	Member benefit	\$150	\$450
WHMIS after GHS Train the Trainer	1 day	Member benefit	\$150	\$450
WPS&H Committee *SAFE Work Certified prerequisite	2 day	Member benefit	\$100	\$300

SITE SPECIFIC TRAINING COURSES	DURATION	MEMBERS	ASSOCIATE MEMBERS	NON-MEMBERS
Aerial Lift Operator Theory *max. 8 students*	1 day	\$300 + \$25 per person	\$450 + \$25 per person	\$1000 + \$25 per person
Aerial Lift Practical Evaluator	1 day	Member benefit	\$200 + \$25 per person	\$600 + \$25 per person
Aerial Lift Theory & Practical Evaluator *max. 8 students	1 day	\$400 + \$25 per person	\$550 + \$25 per person	\$1100 + \$25 per person
Aerial Lift Train the Trainer *includes 3 to 8 operators	2 day	\$400 + \$25 per person	\$550 + \$25 per person	\$1100 + \$25 per person
Confined Space Awareness	1 day	Member benefit	\$200 + \$25 per person	\$600 + \$25 per person
Ergonomics (MSI) Training	1 day	Member benefit	\$200 + \$25 per person	\$600 + \$25 per person
Fall Protection *prerequisite for aerial lift training	1 day	Member benefit	\$200 + \$25 per person	\$600 + \$25 per person
Fall Protection Train the Trainer	Contact Made Safe	Member benefit	\$200 per person	\$600 per person
Forklift Operator Theory *max. 8 students	1 day	\$300 + \$25 per person	\$450 + \$25 per person	\$1350 + \$25 per person
Forklift Practical Evaluator	1 day	Member benefit	\$200 + \$25 per person	\$600 + \$25 per person
Forklift Theory & Practical *max. 8 students	1 day	\$300 + \$25 per person	\$450 + \$25 per person	\$1350 + \$25 per person
Inspections	1 day	Member benefit	\$200 + \$25 per person	\$600 + \$25 per person
Internal Auditor *SAFE Work Certified prerequisite	3 day	Member benefit	\$200 + \$25 per person	\$600 + \$25 per person
Investigations	1 day	Member benefit	\$200 + \$25 per person	\$600 + \$25 per person
Lockout – Tag Out	1 day	Member benefit	\$200 + \$25 per person	\$600 + \$25 per person
Overhead Crane Operator (under 5 tonnes) *max. 8 students	1 day	\$300 + \$25 per person	\$450 + \$25 per person	\$1350 + \$25 per person
Overhead Crane Operator (over 5 tonnes) *max. 8 students *Requires overhead crane course plus 40 hours of supervised operation	1 day	\$300 + \$25 per person	\$450 + \$25 per person	\$1350 + \$25 per person
Overhead Crane Practical Evaluator	1 day	Member benefit	\$200 + \$25 per person	\$600 + \$25 per person
Overhead Crane Rigging *Overhead Crane Operator pre-requisite	1 day	Member benefit	\$200 + \$25 per person	\$600 + \$25 per person
Racking Inspection & Maintenance	1 day	Member benefit	\$200 + \$25 per person	\$600 + \$25 per person
Respiratory Protection *includes fit testing*	1 day	Member benefit	\$200 + \$25 per person	\$600 + \$25 per person
Respiratory Fit Testing (theory & medical assessment completed in house)	Contact Made Safe	Member benefit	\$25 per person	\$75 per person
Safety Essentials for Leaders *SAFE Work Certified Prerequisite	2 day	Member benefit	\$200 + \$25 per person	\$600 + \$25 per person
Safety Essentials for Supervisors	1 day	Member benefit	\$200 + \$25 per person	\$600 + \$25 per person

Safety Management Systems (SMS) <i>*SAFE Work Certified prerequisite</i>	2 day	Member benefit	\$200 + \$25 per person	\$600 + \$25 per person
Telehandler	1 day	Member benefit	\$200 + \$25 per person	\$600 + \$25 per person
Violence & Harassment	1 day	Member benefit	\$200 + \$25 per person	\$600 + \$25 per person
WHMIS after GHS	1 day	Member benefit	\$250 + \$25 per person	\$600 + \$25 per person
GHS / WHMIS Train the Trainer	1 day	Member benefit	\$250 + \$25 per person	\$600 + \$25 per person
WPH&S Committee <i>*SAFE Work Certified Prerequisite</i>	2 day	Member benefit	\$200 + \$25 per person	\$600 + \$25 per person

Fees are based on Winnipeg locations. Travel to other centers may result in additional costs for non-member firms.

LUNCH AND LEARN

Generally, these courses are provided on a day when the Made Safe advisor will also be performing an inspection (see Services) at the firm's location. The advisor comes prepared with handouts and sign-in sheets so that Made Safe and your firm can track/prove the training. The courses are designed to be delivered in a cafeteria or other gathering location while the workers have their lunch. Typically, the entire course takes approximately 45 minutes so that your workers are not away from their stations for more than an hour.

Current subjects include Violence and Harassment in the Workplace, Ergonomics Signs & Symptoms, Hand Safety, Eye Safety, Back Safety and many more. If an organization has a specific subject in mind that we do not already have packaged, we can have the course ready for delivery in approximately two to four weeks.

COURSE DESCRIPTIONS

ADULT LEARNING THEORY

AVAILABILITY | *Regional and Site Specific*

PREREQUISITE | *All Train-the-Trainer Programs*

REASONING

Adults learn differently than children. This course helps trainers recognize and deal with adult learning situations and will help develop in-house trainers, enabling your facility to be self-sufficient in regard to your training needs.

GOAL

This course will give the learner a better understanding of how adults learn, their roles as instructors as well as dealing with problems that may arise throughout their presentations. Upon successful completion of this course a certificate, and/or wallet card where applicable, will be mailed to the student.

STANDARDS

This course is designed to meet or exceed provincial legislation and industry best practices.

DURATION AND MATERIALS

The course includes five hours of theory, delivered in an extensive course on adult learning characteristics, the role of the instructor, learning styles, teaching styles as well as valuable teaching techniques.

TARGET AUDIENCE

The course is designed for trainers at all levels of your facility that want to further develop an understanding of the way their students learn.

SPECIFIC LEARNING

Topics include how to effectively teach adults through understanding their learning characteristics and your teaching styles. How to recognize why some training fails and the steps needed to ensure yours doesn't.

All Made Safe Train-the-Trainer (TTT) courses include adult learning as part of the curriculum. Once the learner has taken the adult learning course, the credit will be applied to any further TTT classes they attend. This enables the learner to skip that portion of the subsequent TTT course(s).

AERIAL LIFT OPERATOR THEORY

AVAILABILITY | *Regional and Site specific*

PREREQUISITE | *Fall Protection Training*

REASONING

Aerial lift incidents can cause significant injuries and deaths as well as extensive property damage. Legislation states that Powered Mobile Equipment (PME) operators require extensive training that includes: duties, operation, terminology, inspection and maintenance among others. Legislation requires training before an operator is considered competent (classroom & practical).

GOAL

This course will provide learners with an understanding of aerial lift terminology and safety principles, the ability to safely operate and inspect an aerial lift and assess and control hazards on site. Upon successful completion of this course a certificate, and/or wallet card where applicable, will be mailed to the student.

STANDARDS

This course is designed to meet or exceed provincial legislation and industry best practices.

DURATION AND MATERIALS

The course includes five hours of theory and includes a written test as well as a practical evaluation. Learners will receive a manual which includes excerpts of the applicable legislation.

TARGET AUDIENCE

This course is designed to certify all aerial lift operators, regardless of their position within the company.

SPECIFIC LEARNING

Topics include an overview of the parts of an aerial lift, important safety principles, assessing hazards, safe operation and inspection of aerial lifts. Instruction includes information different types of aerial lifts (scissor, boom).

AERIAL LIFT PRACTICAL EVALUATOR

AVAILABILITY | *Site specific*

PREREQUISITE | *Fall Protection Training, Aerial Lift Theory*

REASONING

Legislation requires proof of competence for all workers. This training includes observation of the certificate holder's competence.

GOAL

This course will provide learners with an understanding of the safety principles and movements required to successfully evaluate the aerial lift operator's ability to correctly use the lift. Upon successful completion of this course a certificate will be mailed to the student.

STANDARDS

This course is designed to meet or exceed provincial legislation and industry best practices.

DURATION AND MATERIALS

The course includes three hours of theory which includes a written test, as well as a practical evaluation demonstration.

TARGET AUDIENCE

This course is designed to certify supervisors or competent aerial lift operators as practical evaluators.

SPECIFIC LEARNING

Topics include an overview of the parts of a lift, important safety principles, assessing hazards, safe operation and inspection of the aerial lift.

AERIAL LIFT THEORY & PRACTICAL

AVAILABILITY | *Regional and Site specific (company must schedule time for site specific practical for certification. Practical must be completed on site for certification.)*

PREREQUISITE | *Fall Protection Training*

REASONING

Aerial lift incidents can cause significant injuries and deaths as well as extensive property damage. Legislation states that Powered Mobile Equipment (PME) operators require extensive training that includes duties, operation, terminology, inspection and maintenance among others. Legislation requires training before an operator is considered competent (classroom & practical). This course will fulfill those legislative requirements and certify competent aerial lift operators.

GOAL

This course will provide learners with an understanding of aerial lift terminology and safety principles, the ability to safely operate and inspect an aerial lift, and assess and control hazards on site. Upon successful completion of this course a certificate, and/or wallet card where applicable, will be mailed to the student.

STANDARDS

This course is designed to meet or exceed provincial legislation and industry best practices.

DURATION AND MATERIALS

The course includes five hours of theory which includes a written test, as well as practical operation and observation, and a practical evaluation. Successful learners will be certified competent operators. Learners will receive a manual that includes excerpts of the applicable legislation.

TARGET AUDIENCE

This course is designed to certify all aerial lift operators, regardless of their position within the company.

SPECIFIC LEARNING

Topics include an overview of the parts of an aerial lift, important safety principles, assessing hazards, safe operation and inspection of aerial lifts. Instruction includes information on different types of aerial lifts (scissor, boom).

AERIAL LIFT TRAIN THE TRAINER

AVAILABILITY | *Regional and Site specific*

PREREQUISITE | *Fall Protection Training, Adult Learning Theory*

REASONING

Aerial lift incidents can cause significant injuries and deaths as well as extensive property damage. Legislation states that Powered Mobile Equipment (PME) operators require training that includes duties, operation, terminology, inspection and maintenance among others. Legislation requires training before an operator is considered competent (classroom & observed practical). This course will develop in-house aerial lift trainers, enabling your facility to be self-sufficient in regard to your aerial lift operator training needs.

GOAL

The course will enable the learner to provide their students with an understanding of aerial lift terminology and safety principles, the ability to safely inspect and operate an aerial lift and assess hazards on site. Upon successful completion of this course a certificate, and/or wallet card where applicable, will be provided to the student.

STANDARDS

This course is designed to meet or exceed provincial legislation and industry best practices.

DURATION AND MATERIALS

The course requires the learner to have Adult Learning Theory prior to this class. The Aerial Lift Train-the-Trainer (TTT) course will allow learners to deliver aerial lift theory including duties, operation, terminology, inspection and maintenance of aerial lifts. The second day will also include a Practical Evaluator course. TTT learners will receive a manual that includes detailed instruction on the course to be presented and a USB, which includes a PowerPoint presentation of the course, student manual, student exams, inspection checklists and the practical evaluation.

TARGET AUDIENCE

This course is designed to certify all aerial lift trainers, regardless of their position within the company.

SPECIFIC LEARNING

This course is designed for supervisors or workers who have the ability to speak in front of others, and a clear understanding of aerial lift operation. It is strongly encouraged that TTT aerial instructors have an understanding of Adult Learning Theory and Fall Protection training.

CONFINED SPACE AWARENESS

AVAILABILITY | *Regional and Site specific*

REASONING

Working within a confined space can be one of the most dangerous jobs performed in any facility. An incident inside a confined space can cause significant injury and even death. Legislation has very specific regulations governing the work performed in confined spaces. It is imperative that anyone entering a confined space must have the training needed to save their or the lives of others in the confined space.

GOAL

This course will provide learners with the ability to identify and assess confined spaces, recognize and control hazards and be able to use confined space personal protective equipment (PPE) and equipment properly. Upon successful completion of this course a certificate, and/or wallet card where applicable, will be mailed to the student.

STANDARDS

This course is designed to meet or exceed provincial legislation and industry best practices.

DURATION AND MATERIALS

The course includes six hours of theory, including instruction on how to prepare entry plans. Learners will receive a manual which includes excerpts of the applicable legislation.

TARGET AUDIENCE

This course is designed for supervisors, lead hands and workers who work in or around confined spaces.

SPECIFIC LEARNING

Topics include the identification of confined spaces and the hazards associated with them, including gases that may be encountered while in a confined space, proper ventilation techniques as well as PPE and rescue procedures.

ERGONOMICS (MSI) TRAINING

AVAILABILITY | *Regional and Site specific*

REASONING

Ergonomic injury is the highest single cause of injury and injury costs in manufacturing. Typical types are back, shoulder and repetitive strain injuries. Any of these can be prevented with better job/task design.

GOAL

This course will provide learners with the ability to assess the interplay between workers and their tasks. The assessments will indicate where jobs have the potential to cause harm or injury. Additionally, learners will be able to work both independently and as a team to re-design the task(s), if necessary, to make them more ergonomically correct. Upon successful completion of this course a certificate, and/or wallet card where applicable, will be mailed to the student.

STANDARDS

This course is designed to meet or exceed provincial legislation, CSA standards and industry best practices.

DURATION AND MATERIALS

The course includes four hours of theory and two hours of practical. Learners will receive a manual as well as samples of physical demand descriptions and other forms.

TARGET AUDIENCE

The ergonomic course is designed for human resource and safety managers, middle-to-upper management, supervisors, union or WPS&H committee representatives and workers.

SPECIFIC LEARNING

Learners will use a number of different tools to develop physical demand descriptions for tasks. This information is useful when hiring (i.e. get the right type of person for the job), training (e.g. work hardening, etc.), planning capacity (i.e. max. output available), and after injury (i.e. accurate description of activities for health care workers).

The learners will develop the ability to look at jobs from a different viewpoint in order to make the specific tasks within a job less harmful and easier on the worker in the most cost-effective manner. Specific goals of the job redesign are to reduce harm and costs while increasing production and quality. Jobs targeted during the class will be those that the class and/or the organization's managers have selected as being their most harmful or difficult to change.

FALL PROTECTION THEORY & PRACTICAL

AVAILABILITY | *Regional and Site specific*

REQUIRED for all Aerial Lift training programs

REASONING

Falls from heights as low as 1.2 meters are a major cause of significant injuries and deaths. Legislation states that workers exposed to permanent work heights of over 1.2 meters, temporary work heights of three meters or any height where the surface they land upon can cause injury must have fall protection systems and training on those systems.

GOAL

This course will provide learners with the ability to assess fall hazards, control the hazards if possible and use fall protection equipment properly. Upon successful completion of this course a certificate, and/or wallet card where applicable, will be mailed to the student.

STANDARDS

This course is designed to meet or exceed provincial legislation and industry best practices.

DURATION AND MATERIALS

The course includes six hours of theory including instruction on how to wear fall protection. Learners will receive a manual which includes excerpts of the applicable legislation.

TARGET AUDIENCE

This course is designed for supervisors, lead hands and workers who may be exposed to fall hazards.

SPECIFIC LEARNING

Topics include the inspection, use, maintenance and procurement of proper workplace ladders. Fall protection training includes the principles, inspection, use, maintenance and procurement of proper fall protection and travel restraints. Specific subjects also include how to calculate safe tie off points for safe fall heights and clearances.

Learners are required to bring their fall protection equipment (minimum of full body harness) to the class so that they can demonstrate competency in donning, adjusting and wearing the equipment.

FALL PROTECTION TRAIN THE TRAINER

AVAILABILITY | *Regional and Site specific*

PREREQUISITE | *Adult Learning Theory*

REASONING

Falls from heights as low as 1.2 meters are a major cause of significant injuries and deaths. Legislation states that workers exposed to permanent work heights of over 1.2 meters, temporary work heights of three meters or any height where the surface they land upon can cause injury must have fall protection systems and training on those systems. This course will develop in-house fall arrest trainers, enabling your facility to be self-sufficient in regard to your fall arrest wearers training needs.

GOAL

This course will provide an in-house trainer with the ability to train employees to be able to assess fall hazards, control the hazards if possible and to be able to use fall protection equipment properly. Upon successful completion of this course a certificate, and/or wallet card where applicable, will be mailed to the student.

STANDARDS

This course is designed to meet or exceed provincial legislation and industry best practices.

DURATION AND MATERIALS

The course includes six hours of theory including instruction on how to wear fall protection. Attendees will receive a manual which includes excerpts of the applicable legislation.

TARGET AUDIENCE

This course is designed for supervisors, safety personnel, lead hands and workers who may be exposed to fall hazards.

SPECIFIC LEARNING

Topics include the inspection, use, maintenance and procurement of proper workplace ladders. Fall protection training includes the principles, inspection, use, maintenance and procurement of proper fall protection and travel restraints. Specific subjects also include how to calculate safe tie off points for safe fall heights and clearances.

Learners are required to bring their fall protection equipment (minimum of full body harness) to the class so that they can demonstrate competency in donning, adjusting and wearing the equipment.

FORKLIFT OPERATOR THEORY

AVAILABILITY | *Regional and Site Specific*

REASONING

Forklift incidents can cause significant injuries and deaths as well as extensive property damage. Legislation states that Powered Mobile Equipment (PME) operators require training that includes duties, operation, terminology, inspection and maintenance among others. Legislation requires training (classroom and practical) before an operator is considered competent.

GOAL

This course will provide learners with an understanding of forklift terminology and safety principles, the ability to safely operate and inspect a forklift and assess and control hazards on site. Upon successful completion of this course a certificate, and/or wallet card where applicable, will be mailed to the student.

STANDARDS

This course is designed to meet or exceed provincial legislation and industry best practices.

DURATION AND MATERIALS

The course includes four hours of theory, which includes a written test. Learners will receive a manual which includes excerpts of the applicable legislation.

TARGET AUDIENCE

This course is designed to certify all forklift operators on all classes of Power Mobile Equipment, regardless of their position within the company.

SPECIFIC LEARNING

Topics include an overview of the parts of a forklift, important safety principles, assessing hazards, safe operation and inspection of forklifts. Instruction includes information on forklifts of all classes and fuel sources.

FORKLIFT THEORY & PRACTICAL

AVAILABILITY | *Regional and Site specific (company must schedule time for a practical evaluation to be completed at company site)*

REASONING

Forklift incidents can cause significant injuries and deaths as well as extensive property damage. Legislation states that Powered Mobile Equipment (PME) operators require extensive training that includes duties, operation, terminology, inspection and maintenance among others. Legislation requires successful completion of classroom and practical before an operator is considered competent. This course will fulfill those legislative requirements and certify competent forklift operators.

GOAL

This course will provide learners with an understanding of forklift terminology and safety principles, the ability to safely operate and inspect a forklift and assess and control hazards on site. Upon successful completion of this course a certificate, and/or wallet card where applicable, will be mailed to the student.

STANDARDS

This course is designed to meet or exceed provincial legislation and industry best practices.

DURATION AND MATERIALS

The course includes four hours of theory which includes a written test, as well as practical operation and observation and a practical evaluation. Successful learners will be certified competent operators. Learners will receive a manual that includes excerpts of the applicable legislation.

TARGET AUDIENCE

This course is designed to certify all forklift operators regardless of their position within the company.

SPECIFIC LEARNING

Topics include an overview of the parts of a forklift, important safety principles, assessing hazards, safe operation and inspection of forklifts. Instruction includes information on forklifts of all classes and fuel sources.

FORKLIFT TRAIN THE TRAINER

AVAILABILITY | *Regional*

PREREQUISITE | *Adult Learning Theory*

Includes Practical Evaluator

REASONING

Forklift incidents can cause significant injuries and deaths as well as extensive property damage. Legislation states that Powered Mobile Equipment (PME) operators require extensive training that includes duties, operation, terminology, inspection and maintenance among others. Legislation also requires training (classroom and practical) before an operator is considered competent.

This course will enable your facility to be self-sufficient in your training needs to develop competent forklift operators.

GOAL

This course will develop presentation skills so the learner will be able to provide their students with an understanding of forklift terminology and safety principles, the ability to safely operate and inspect a forklift as well as assess and control hazards on site. Upon successful completion of this course a certificate, and/or wallet card where applicable, will be mailed to the student.

STANDARDS

This course is designed to meet or exceed provincial legislation and industry best practices.

DURATION AND MATERIALS

The course includes 20 hours of theory, delivered in an extensive course on duties, operation, terminology, inspection and maintenance of forklifts which includes a written test. Training will include the actual course to be delivered to the learner's students, has the learner present sections of the course to develop presentation skills, and a Practical Evaluator course. Train-the-Trainer (TTT) learners will receive a manual that includes detailed instruction on the course to be presented and a USB that includes a PowerPoint presentation of the course, student manuals, student exams, inspection checklists and the practical evaluation.

TARGET AUDIENCE

This course is designed for supervisors or workers who have the ability to speak in front of others, and a clear understanding of forklift operation in a manufacturing environment. It is required that TTT Forklift instructors have an understanding of Adult Learning Theory, which in some cases can be delivered prior to the TTT Forklift instruction.

SPECIFIC LEARNING

Topics include presentation skills, an overview of the parts of a forklift, important safety principles, assessing hazards, safe operation and inspection of forklifts. Instruction includes information on forklifts of all classes and fuel sources.

FORKLIFT PRACTICAL EVALUATOR

AVAILABILITY | *Regional and Site specific*

PREREQUISITE | *Forklift operator theory*

REASONING

Legislation requires proof of competence for all workers. This training includes observation of the certificate holder's competence.

GOAL

This course will provide learners with an understanding of the safety principles and movements required to successfully evaluate the forklift operator's ability to correctly use a forklift. Upon successful completion of this course a certificate will be mailed to the student.

STANDARDS

This course is designed to meet or exceed provincial legislation and industry best practices.

DURATION AND MATERIALS

The course includes three hours of theory which includes a written test as well as a practical evaluation demonstration.

TARGET AUDIENCE

This course is designed to certify supervisors or competent forklift operators as practical evaluators.

SPECIFIC LEARNING

Topics include an overview of the parts of a forklift, important safety principles, assessing hazards, safe operation and inspection of the forklift.

INSPECTIONS TRAINING

AVAILABILITY | *Regional and Site specific*

REASONING

Inspections are a proactive indication of a fully-functioning safety management system. Legislation requires many different types of inspections to be completed throughout your facility. This course will provide information and explanation on those required inspections.

GOAL

This course will enable the learner to go from understanding what needs to be inspected and when, to completing the inspections and making recommendations for corrective action to deficiencies. Upon successful completion of this course a certificate, and/or wallet card where applicable, will be mailed to the student.

STANDARDS

This course is designed to meet or exceed provincial legislation and industry best practices.

DURATION AND MATERIALS

The course includes four hours of theory on the step-by-step development of an inspection system and a two hour inspection and discussion when site specific. Learners will receive a manual that includes excerpts of the applicable legislation.

TARGET AUDIENCE

This course is designed for supervisors or safety personnel with the need to fully understand the inspection process. A clear understanding of the processes used throughout the facility is beneficial.

SPECIFIC LEARNING

Topics include legislative inspection requirements, developing inspection checklists, conducting an inspection and making recommendations to employers for corrective actions.

INTERNAL AUDITOR TRAINING

AVAILABILITY | *Regional and Site specific*

PREREQUISITE | *Safety Management Systems (SMS)*

Compulsory for SAFE Work Certification

REASONING

Made Safe's Internal Auditor course was developed based on Made Safe's safety certification program. Participants will work with both the Certification Standard and the Standard Audit Tool. Internal auditors can be used in two capacities; preparing your organization for an audit or maintaining your certification by completing your first year and/or second year maintenance audits.

GOAL

This course will provide learners with the ability to audit a safety management system for an organization of any size. Upon successful completion of this course a certificate of attendance will be mailed to the student.

Subsequent to completing the theory portion, the participants must complete an internal audit of their firm or a significant division within their firm. Made Safe will, with sufficient prior notice, provide a coach/mentor for up to two days to assist the auditing student in performing their internal audit. Upon completion of an internal audit, the participant will receive a certificate indicating they are a Made Safe Certified Auditor.

STANDARDS

This course is designed to meet or exceed provincial legislation, CSA standards, industry best practices, and international standards, such as the CSA Z1000, ANSI Z99, OHSAS 18001 standard for safety management systems and ISO 19011 standard for auditing management systems.

DURATION AND MATERIALS

The course includes three days of theory where the learners will work both independently and in groups. Learners will receive an instructional manual that includes a copy of the Certification Standard as well as the Audit Tool.

TARGET AUDIENCE

This course is designed for safety coordinators, Committee co-chairs and middle to upper management.

SPECIFIC LEARNING

Learners will be taken on a step-by-step journey through the auditing of a safety management system. Audit scoring is based on documentation, observation and employee interviews. The learner will be instructed on what to be looking for in each of the elements the audit includes.

INVESTIGATIONS

AVAILABILITY | *Regional and Site specific*

REASONING

Investigations are an important part of a fully functioning Safety Management System. Legislation requires investigations of different types of incidents to be completed at your facility. This course will provide information and explanation on those required investigations.

GOAL

This course will enable the learner to go from ensuring steps are taken that no further injury or damage occurs at the time of the incident to writing the investigation report. Upon successful completion of this course a certificate, and/or wallet card where applicable, will be mailed to the student.

STANDARDS

This course is designed to meet or exceed provincial legislation and industry best practices.

DURATION AND MATERIALS

The course includes four hours of theory on the investigation process from initial injury, gathering physical evidence, to determining causes and costs of the incident. Learners will receive a manual which includes excerpts of the applicable legislation.

TARGET AUDIENCE

This course is designed for supervisors, committee co-chairs or safety personnel with the need to fully understand the investigation process. A clear understanding of the processes used throughout the facility is beneficial.

SPECIFIC LEARNING

Topics include legislative investigation requirements, gathering physical evidence, interviewing witnesses, checking background information, determining causes, making recommendations to employers for corrective actions and writing the investigation report.

LOCKOUT – TAG OUT

AVAILABILITY | *Regional and Site specific*

REASONING

Legislation requires employers to identify existing or potential risks to the health and safety of their employees and to reduce or control the identified risks.

GOAL

This course will provide learners with the ability to meet their legislated duties in the workplace. The course will provide you with an awareness of the importance of proper lockout/tag out and will also assist in the development and implementation of a lockout/tag out program. Upon successful completion of this course a certificate, and/or wallet card where applicable, will be mailed to the student.

STANDARDS

This course is designed to meet or exceed provincial legislation and industry best practices.

DURATION AND MATERIALS

The course includes four hours of theory where learners will work both independently and in groups. Learners will receive a manual that includes excerpts of the applicable legislation.

TARGET AUDIENCE

This course is designed for supervisors, lead hands and middle management, but could be attended by anyone that would participate in the company's lockout/tag out program development.

SPECIFIC LEARNING

Topics include lockout/tag out definitions, legislation, lockout process and how that information should be used as part of the company's safe work practices and procedures.

OVERHEAD CRANE OPERATOR THEORY

AVAILABILITY | *Regional and Site specific (practical must be done onsite)*

REASONING

Crane or hoist incidents can cause significant injuries and deaths as well as extensive property damage. Legislation states that competent crane operators require training that includes duties, operation, terminology, inspection and maintenance among others.

GOAL

This course will provide learners with an understanding of crane/hoist terminology and safety principles, the ability to safely operate and inspect a crane/hoist and assess and control hazards on site. Upon successful completion of this course a certificate, and/or wallet card where applicable, will be mailed to the student.

STANDARDS

This course is designed to meet or exceed provincial legislation and industry best practices.

DURATION AND MATERIALS

The course includes four hours of theory, which includes a written test, as well as a practical evaluation. Learners will receive a manual that includes excerpts of the applicable legislation.

TARGET AUDIENCE

This course is designed to certify all crane/hoist operators, regardless of their position within the company.

SPECIFIC LEARNING

Topics include an overview of the parts of a crane, important safety principles, assessing hazards, safe operation and inspection of the crane.

OVERHEAD CRANE PRACTICAL EVALUATOR

AVAILABILITY | *Regional and Site specific*

PREREQUISITE | *Overhead Crane training*

REASONING

Legislation requires proof of competence for all workers. This training includes observation of the certificate holder's competence.

GOAL

This course will provide learners with an understanding of the safety principles and movements required to successfully evaluate the crane/hoist operator's ability to correctly use a crane/hoist. Upon successful completion of this course a certificate will be mailed to the student.

STANDARDS

This course is designed to meet or exceed provincial legislation and industry best practices.

DURATION AND MATERIALS

The course includes three hours of theory, which includes a written test as well as a practical evaluation demonstration.

TARGET AUDIENCE

This course is designed to certify supervisors or competent crane/hoist operators as practical evaluators.

SPECIFIC LEARNING

Topics include an overview of the parts of a crane, important safety principles, assessing hazards, safe operation and inspection of the crane.

OVERHEAD CRANE RIGGING TRAINING

AVAILABILITY | *Regional and Site specific*

REASONING

Crane or hoist incidents can cause significant injuries and deaths as well as extensive property damage. Legislation states that competent crane operators require training that includes: duties, operation, terminology, inspection and maintenance among others.

GOAL

This course will provide learners with an understanding of crane/hoist rigging inspection requirements. Upon successful completion of this course a wallet card will be mailed to the student.

STANDARDS

This course is designed to meet or exceed provincial legislation and industry best practices.

DURATION AND MATERIALS

The course includes six hours of theory. Learners will receive a handout that includes what was discussed and excerpts of the applicable legislation. A hands-on inspection of rigging will be included.

TARGET AUDIENCE

This course is designed to certify all crane/hoist operators in the proper inspection of rigging, regardless of their position within the company.

SPECIFIC LEARNING

Topics include many types of rigging used within the company and what to look for when inspecting of an overhead crane.

OVERHEAD CRANE TRAIN THE TRAINER

AVAILABILITY | *Regional*

PREREQUISITE | *Adult Learning Theory*

Includes Practical Evaluator

REASONING

Crane or hoist incidents can cause significant injuries and deaths as well as extensive property damage. Legislation states that competent crane operators require training that includes duties, operation, terminology, inspection and maintenance among others. Legislation requires classroom training as well as supervised operation before an operator is considered competent.

This course will develop in-house overhead crane trainers, enabling your facility to be self-sufficient in regards to your crane/hoist operator training needs.

GOAL

This course will develop presentation skills so the learner will be able to provide their students with an understanding of crane/hoist terminology and safety principles, the ability to safely operate and inspect a crane/hoist and assess and control hazards on site. Upon successful completion of this course a certificate, and/or wallet card where applicable, will be mailed to the student.

STANDARDS

This course is designed to meet or exceed provincial legislation and industry best practices.

DURATION AND MATERIALS

The course includes 16 hours of theory, delivered in an extensive course on duties, operation, terminology, inspection and maintenance. Training will include the actual course to be delivered to the learner's students, has the learner present sections of the course to develop presentation skills, and a Practical Evaluation course. Train-the-Trainer (TTT) learners will receive a manual that includes detailed instruction on the course to be presented and a USB which includes a PowerPoint presentation of the course, student manual, student exam, inspection checklists and the practical evaluation.

TARGET AUDIENCE

This course is designed for supervisors or workers who have the ability to speak in front of others and a clear understanding of crane/hoist operation in a manufacturing environment. It is strongly encouraged that TTT Overhead Crane instructors have an understanding of Adult Learning Theory, which in some cases can be delivered prior to the TTT Overhead Crane instruction.

SPECIFIC LEARNING

Topics include presentation tools, an overview of the parts of a crane, important safety principles, assessing hazards, safe operation and inspection of an overhead crane.

RACKING INSPECTION AND MAINTENANCE

AVAILABILITY | *Regional and Site specific*

REASONING

Racking inspections are a proactive indication of a fully-functioning safety management system. Legislation requires racking inspections to be completed throughout your facility. This course will provide information and explanation on those required when inspecting your racking system.

GOAL

This course will enable the learner to go from understanding what needs to be inspected to completing the inspections and making recommendations of corrective action for deficiencies. Upon successful completion of this course a certificate, and/or wallet card where applicable, will be mailed to the student.

STANDARDS

This course is designed to meet or exceed provincial legislation, manufacturers' specifications and industry best practices.

DURATION AND MATERIALS

The course includes four hours of theory on the step-by-step process of racking inspections. The Practical Racking Inspection is two hours when site specific. Learners will receive a manual that includes excerpts of the applicable legislation.

TARGET AUDIENCE

This course is designed for workers, supervisors or safety personnel with the need to fully understand the racking inspection process. A clear understanding of the processes used throughout the facility is beneficial.

SPECIFIC LEARNING

Topics include legislative inspection requirements, rack inspection checklists, conducting an inspection and making recommendations to employers for corrective actions.

RESPIRATORY PROTECTION THEORY/FIT TESTING

AVAILABILITY | *Regional and Site specific*

REASONING

Generally speaking, we only use respirator protection when atmospheric hazards are present so using respiratory protection correctly can mean the difference between life and death. Legislation requires that anyone wearing a respirator be trained and fit tested; this course satisfies all legislative requirements.



GOAL

This course will provide learners with the ability to identify when respirators are required, how to properly use them and give them the confidence that their respirator is protecting them from hazards. Upon successful completion of this course a certificate, and/or wallet card where applicable, will be mailed to the student.

STANDARDS

This course is designed to meet or exceed provincial legislation and industry best practices.

DURATION AND MATERIALS

The course includes six hours of theory, including a fit test when site specific. Learners will receive a manual that includes excerpts of the applicable legislation.

TARGET AUDIENCE

This course is designed for supervisors, lead hands and workers who work in areas requiring the use of respiratory equipment.

SPECIFIC LEARNING

Topics include information about the respiratory system and how it works, the identification of contaminants and the hazards associated with them, respiratory protective equipment as well as inspection and maintenance of the equipment. Learners are required to bring their respiratory equipment to the class so a fit testing can be performed by the instructor.

RESPIRATORY PROTECTION TRAIN THE TRAINER

AVAILABILITY | *Regional and Site specific*

REASONING

Generally speaking, we only use respirator protection when atmospheric hazards are present so using respiratory protection correctly can mean the difference between life and death. Legislation requires that anyone wearing a respirator be trained and fit tested; this course satisfies legislative requirements.

This course will develop in-house respiratory protection trainers, enabling your facility to be self-sufficient in regard to your respiratory protection needs.

GOAL

This course will provide learners with the ability to identify when respirators are required, how to properly use them and give them the confidence that their respirator is protecting them from hazards. Upon successful completion of this course a certificate, and/or wallet card where applicable, will be mailed to the student.

STANDARDS

This course is designed to meet or exceed provincial legislation and industry best practices.

DURATION AND MATERIALS

This course requires the leader to have Adult Learning Theory prior to this class. The course includes six hours of theory and review of Train the Trainer materials. Train-the-Trainer (TTT) learners will receive a manual that includes detailed instruction on the course to be presented and a USB that includes a PowerPoint presentation of the course, student manuals, student exams, inspection checklists and evaluation.

TARGET AUDIENCE

This course is designed for supervisors of workers or workers who have the ability to speak in front of others and a clear understanding of respiratory protection in a manufacturing environment.

SPECIFIC LEARNING

Topics include information about the respiratory system and how it works, the identification of contaminants and the hazards associated with them, respiratory protective equipment as well as inspection and maintenance of the equipment. Learners are required to bring their respiratory equipment to the class so the trainer is well versed in respiratory protection and the requirements to use, maintain and proper fit respiratory protection for workers.

SAFETY ESSENTIALS FOR LEADERS

AVAILABILITY | *Regional and Site specific*
Compulsory for SAFE Work Certification

REASONING

Workplace leaders, such as owners, directors, managers, supervisors and lead hands have more direct and immediate control and effect over the workplace than any other group. Most organizations are unaware of their legal responsibilities.

GOAL

This course will provide learners with the ability to meet the CSA Z1001.13 and their legislated duties in the workplace. Upon successful completion of this course a certificate will be mailed to the attendee.

STANDARDS

This course complies with the SAFE Work Certification Standard and is designed to meet or exceed the CSA standard, provincial legislation and industry best practices.

DURATION AND MATERIALS

The course includes two, eight hour sessions of theory where the learners will work both independently and in groups. Learners will receive a manual that includes excerpts of the applicable legislation.

TARGET AUDIENCE

This course is designed for middle-to-upper management, safety personnel, supervisors and lead hands. Effectiveness of the course in the workplace is almost directly proportional to the number and level of upper management staff in the class.

SPECIFIC LEARNING

Topics include the guiding principles of safety management systems, legislated rights and responsibilities, how to research legislation, the WCB system and how supervisors can have a direct impact on the organization's WCB premiums. Additional topics include risk and hazard analysis, assessment and control, inspections, investigations and incident cost analysis, return to work programs, EAP programs, etc.

SAFETY ESSENTIALS FOR SUPERVISORS

AVAILABILITY | *Regional and Site specific*

REASONING

Supervisors have more direct and immediate control over the workplace than any other group. Most organizations are unaware of their supervisors' legal responsibilities and even the legal definition of a supervisor.

GOAL

This course will provide learners with the ability to meet their legislated duties in the workplace. Upon successful completion of this course a certificate, and/or wallet card where applicable, will be mailed to the student.

STANDARDS

This course is designed to meet or exceed provincial legislation and industry best practices.

DURATION AND MATERIALS

The course includes approximately eight hours of theory where the learners will work both independently and in groups. Learners will receive a manual that includes excerpts of the applicable legislation.

TARGET AUDIENCE

This course is designed for supervisors, lead hands and middle to upper management. Effectiveness of the course in the workplace is almost directly proportional to the number and level of upper management staff in the class.

SPECIFIC LEARNING

Topics include the guiding principles of safety management systems, legislated rights and responsibilities, how to research legislation, the WCB system and how supervisors can have a direct impact on the organization's WCB premiums. Additional topics include risk and hazard analysis, assessment and control, inspections, investigations and incident cost analysis.

SAFETY MANAGEMENT SYSTEMS (SMS)

AVAILABILITY | *Regional and Site specific*
Compulsory for SAFE Work Certification

REASONING

Safety Management Systems (SMS) should be integrated into the management system(s) for the entire organization. Lack of safety planning normally increases an organization's costs significantly. Modern management principles indicate that overall business management can be judged and assessed based on the organization's safety management system.

GOAL

Made Safe helps employers understand Safety Management System requirements set forth by the Workplace Safety and Health Division as well as step-by-step instructions to assist companies in reaching certification to the SAFE Work Certified standard.

Application of the knowledge gained during the course will ensure that learners can develop an SMS program that can prove due diligence above and beyond the legal requirements. Upon successful completion of this course a certificate, and/or wallet card where applicable, will be mailed to the student.

STANDARDS

This course meets the SAFE Work Certified standard. It is designed to meet or exceed provincial legislation, CSA standards, industry best practices, and international (OHSAS, ISO, etc.) standards for safety management systems. The SMS course is based on the SAFE Work Certified standard. As such it meets or exceeds legislated requirements as well as the CSA Z99, ANSI Z1000, and OHSAS 18001 international standards for safety management systems.

DURATION AND MATERIALS

The course includes two days of theory. Learners will receive a manual as well as samples of policies, procedures and forms for each element. All materials are provided both in hard and electronic copy.

TARGET AUDIENCE

This course is designed for committee co-chairs, safety coordinators and middle to upper management.

SPECIFIC LEARNING

Learners will be taken on a step-by-step journey through the development, implementation and operation of a safety management system. It begins with the policies and continues through the intricate steps of each element. Samples of numerous documents are presented and worked through in order to provide the learners with hands-on experience. Real world examples are presented and learners are encouraged to discuss how each element of the SMS can be applied in their workplace.

TELEHANDLER TRAINING

AVAILABILITY | *Site specific*

REASONING

Telehandler incidents can cause significant injuries and even deaths as well as extensive property damage. Legislation states that Powered Mobile Equipment (PME) operators require training that includes duties, operation, terminology, inspection and maintenance among others. Legislation requires theory and practical training (knowledge and skill) before an operator is considered competent.

GOAL

This course will provide operator candidates with an understanding of Telehandler terminology and safety principles, the ability to safely operate and inspect a Telehandler and assess and control hazards in the work area. Upon successful completion of this course a certificate, and/or wallet card where applicable, will be mailed to the operator.

STANDARDS

This course is designed to meet or exceed provincial legislation and industry best practices.

DURATION AND MATERIALS

The course includes four hours of theory followed by a written exam. Upon successful completion of the written exam a practical evaluation for each operator candidate, including performing a proper pre-use inspection of the Telehandler and demonstration of competent operating skills, is conducted. Operator candidates will receive a manual that includes excerpts of the applicable legislation.

TARGET AUDIENCE

This course is designed to deem all Telehandler operators competent regardless of their position within the company.

SPECIFIC LEARNING

Topics include an overview of the parts of a Telehandler, important safety principles, assessing hazards, safe operation and inspection of Telehandler.

VIOLENCE & HARASSMENT TRAINING

AVAILABILITY | *Regional and Site specific*

REASONING

The employer has more direct and immediate control over the workplace than any other group. Most organizations are unaware of their legal responsibilities when it comes to violence and harassment in the workplace.

GOAL

This course will provide learners with the ability to meet their legislated duties in the workplace. Upon successful completion of this course a certificate, and/or wallet card where applicable, will be mailed to the student.

STANDARDS

This course is designed to meet or exceed provincial legislation and industry best practices.

DURATION AND MATERIALS

The course includes four hours of theory where learners will work both independently and in groups. Learners will receive a manual that includes excerpts of the applicable legislation.

TARGET AUDIENCE

This course is designed for employees, supervisors, lead hands and middle to upper management. Effectiveness of this course is almost directly proportional to the number and level of upper management in the class.

SPECIFIC LEARNING

Topics include workplace harassment, legislated rights and responsibilities and handling complaints. The course also covers violence in the workplace as well as working alone. The course will also have examples of violence and harassment policies, procedures and many other resources that companies can use when they return to the workplace after training.

WHMIS AFTER GHS TRAINING

AVAILABILITY | *Regional and Site specific*

REASONING

The misuse of chemicals can have deadly results. Legislation states that workers who work with, or are in proximity to a controlled product must be informed about all hazards associated with the use, storage or handling of the product.

GOAL

This course will provide learners with an understanding of GHS / WHMIS through the recognition and understanding of hazards symbols, Material Safety Data Sheets (MSDS) / Safety Data Sheets (SDS) and product labels. Upon successful completion of this course a certificate, and/or wallet card where applicable, will be mailed to the student.

STANDARDS

This course is designed to meet or exceed provincial legislation and industry best practices.

DURATION AND MATERIALS

The course includes four hours of theory which includes a written test. Learners will receive a manual that includes excerpts of the applicable legislation.

TARGET AUDIENCE

All employees, regardless of their position within the company, must be made aware of the hazards associated with controlled products.

SPECIFIC LEARNING

Topics include an overview of GHS / WHMIS, labels (both supplier and workplace), and classifications of hazardous products and their symbols and MSDS / SDS.

WHMIS AFTER GHS TRAIN THE TRAINER

AVAILABILITY | *Regional and Site specific*

PREREQUISITE | *Adult Learning Theory*

REASONING

The misuse of chemicals can have deadly results. Legislation states that workers who work with, or are in proximity to a controlled product must be informed about all hazards associated with the use, storage or handling of the product.

This course will enable your facility to be self-sufficient in your GHS / WHMIS training needs.

GOAL

This course will develop presentation skills so the learner will be able to provide their students with an understanding of GHS / WHMIS through the recognition and comprehension of hazard symbols, Material Safety Data Sheets (MSDS) / Safety Data Sheets (SDS) and product labels. Upon successful completion of this course a certificate, and/or wallet card where applicable, will be mailed to the student.

STANDARDS

This course is designed to meet or exceed provincial legislation and industry best practices.

DURATION AND MATERIALS

The course includes five hours of theory, delivered in an extensive course on responsibilities, MSDS, hazard symbols and supplier and workplace labeling, which includes a written test. In the afternoon, the learner will present sections of the course to develop presentation skills. Train-the-Trainer (TTT) learners will receive a manual that includes detailed instruction on the course to be presented and a USB that includes a PowerPoint presentation of the course, student manuals and student exams.

TARGET AUDIENCE

This course is designed for supervisors or workers who have the ability to speak in front of others, and a clear understanding of the controlled products used throughout the facility. It is strongly encouraged that TTT GHS / WHMIS instructors have an understanding of Adult Learning Theory, information on which will be included in the TTT GHS / WHMIS Manual.

SPECIFIC LEARNING

Topics include presentation skills, an overview of GHS / WHMIS, labels (both supplier and workplace), classifications of hazardous products and their symbols and MSDS / SDS.

WORKPLACE SAFETY & HEALTH (WPS&H) COMMITTEE TRAINING

AVAILABILITY | *Regional and Site specific*
Compulsory for SAFE Work Certification

REASONING

Provincial legislation (WS&H in Manitoba) requires that manufacturing workplaces with more than 20 workers must have a Health and Safety Committee. The legislation also requires that at minimum the Committee Co-Chairs have at least two days of training on their responsibilities.

GOAL

This course will provide learners with the ability to meet their legislated committee duties in the workplace. Upon successful completion of this course a certificate, and/or wallet card where applicable, will be mailed to the student

STANDARDS

This course complies with the SAFE Work Certification Standard and is designed to meet or exceed provincial legislation and industry best practices.

DURATION AND MATERIALS

The course includes 12 hours of theory where the learners will work both independently and in groups. Learners will receive a manual that includes excerpts of the applicable legislation.

TARGET AUDIENCE

This course is designed for all committee members and is most effective when delivered to each member of the committee even if it cannot be delivered to them all at the same time.

SPECIFIC LEARNING

Topics include the guiding principles of safety management systems; legislated rights and responsibilities; how to research legislation; the WCB system; risk and hazard analysis, assessment and control; inspections; investigations and incident cost analysis. Specific to Committee duties are how to handle work concerns and refusals; how to work as a Committee; how to present findings and/or propose interventions; and, what to do if interventions are vetoed by management.

FOR MORE INFORMATION

MADE SAFE | *Manufacturing Safety for Manitoba*
67B Scurfield Blvd
Winnipeg, MB R3Y 1G4
P 204.949.1454
F 204.943.3476

NEAL CURRY
Executive Director
neal.curry@madesafe.ca
D 204.500.3339
C 204.894.1527

DANI DESAUTELS
Program Manager
dani.desautels@madesafe.ca
D 204.500.3341
C 204.794.7341

info@madesafe.ca | madesafe.ca

*Prices are accurate at time of printing and are subject to change without notice.
Please contact Made Safe for current rates and schedules.*

Made Safe and its logo are trademarks of the Canadian Manufacturers & Exporters

© Canadian Manufacturers & Exporters (CME), all rights reserved. Any modification of this document without the express written consent of CME is strictly prohibited.

